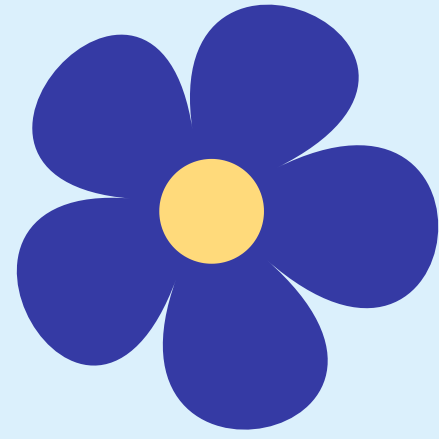


HOMEOPATHIC COMBO



SWIMMER'S EAR

PULSATILLA 30

- Sensitive to heat
- Painful to touch
- Discharge, yellow and smelly

HEPAR SULPH 30

- Better with heat
- Smelly discharge



ACONITE 30

- Sudden onset
- Fever

BELLADONNA 30

- Throbbing
- Red
- Inflamed
- Worse from touching

